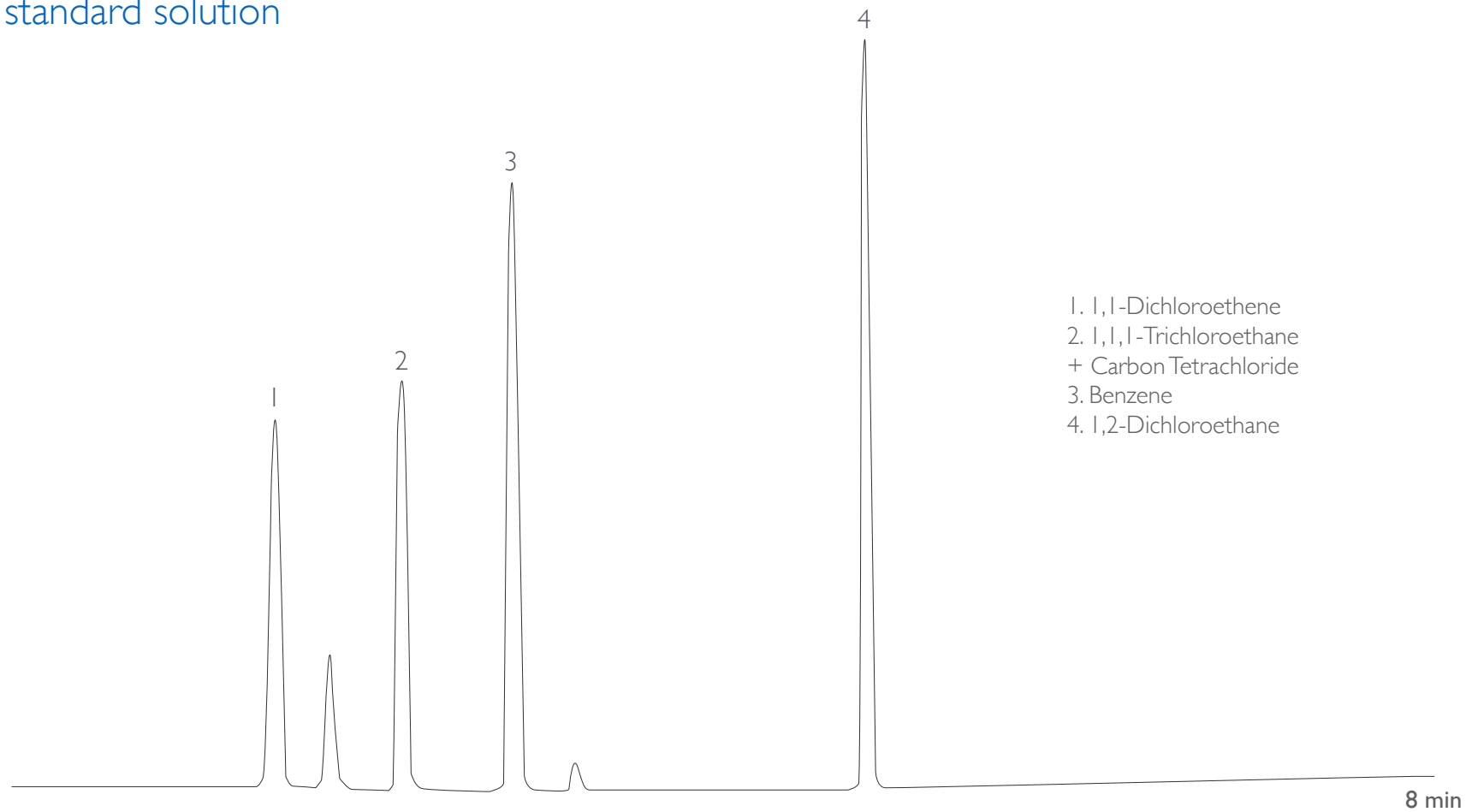




## Class I Mix standard solution



Analysis carried out with DANI Master-SHS and Master-GC system.

Column: **MEGA-624 - 0.18mm, 1.00 $\mu$ m, 20m**  
Catalog Code: C-624-018-100-20

(USP G43 stationary phase)

### Conditions:

Injection: 1 mL injection volume, headspace equilibration temperature 80°C, equilibration time 40min, transfer line temperature 90°C.

Detector: FID 200°C.

Oven Program: 35°C (5min), 10°C/min.

Carrier Gas: Helium, 100kPa.

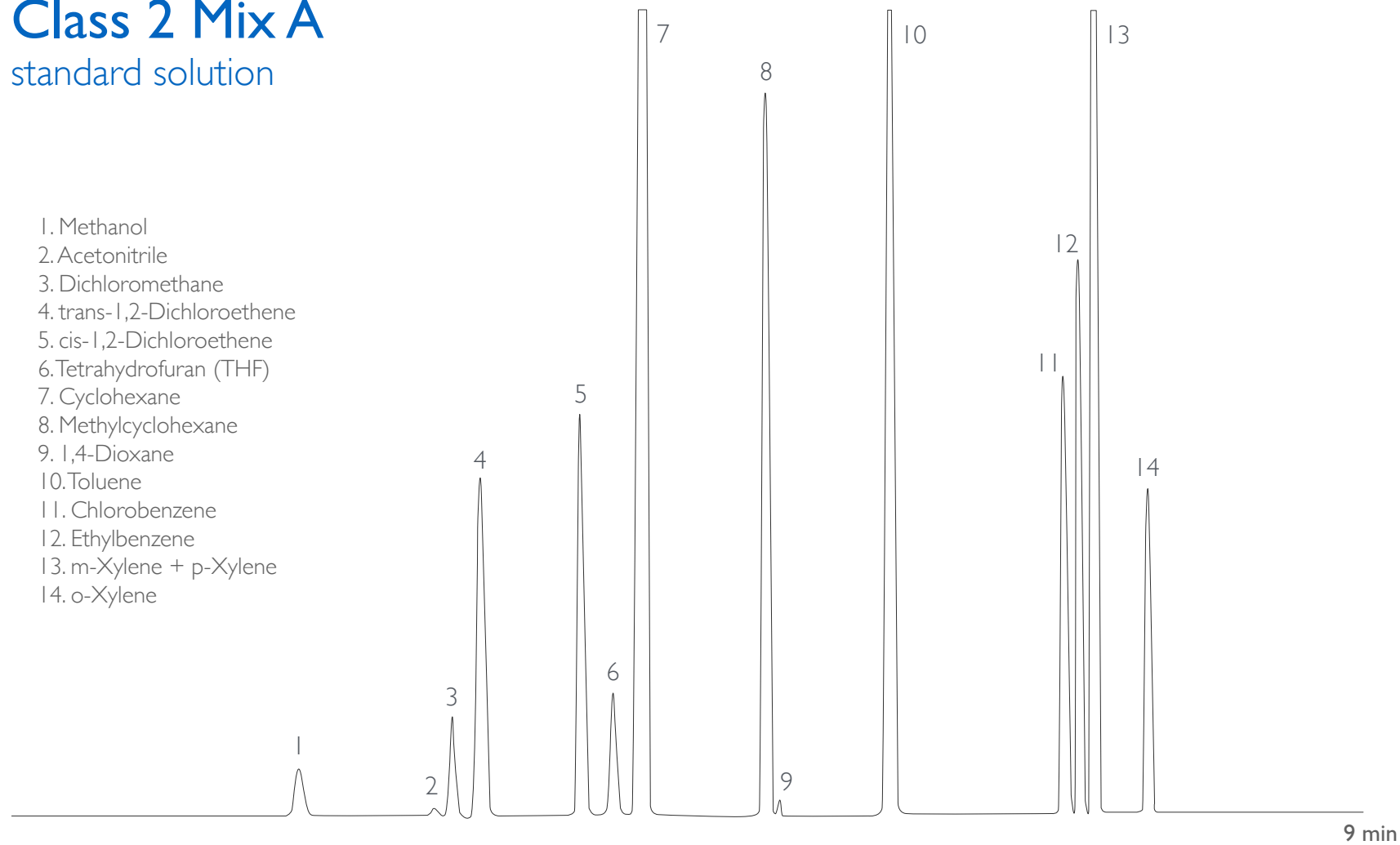
### Sample:

Residual Solvents - Class I Mix, headspace sampling.



## Class 2 Mix A standard solution

1. Methanol
2. Acetonitrile
3. Dichloromethane
4. trans-1,2-Dichloroethene
5. cis-1,2-Dichloroethene
6. Tetrahydrofuran (THF)
7. Cyclohexane
8. Methylcyclohexane
9. 1,4-Dioxane
10. Toluene
11. Chlorobenzene
12. Ethylbenzene
13. m-Xylene + p-Xylene
14. o-Xylene



Analysis carried out with DANI Master-SHS and Master-GC system.

Column: **MEGA-624 - 0.18mm, 1.00 $\mu$ m, 20m**

Catalog Code: C-624-018-100-20

(USP G43 stationary phase)

### Conditions:

Injection: 1 mL injection volume, headspace equilibration temperature 80°C, equilibration time 40min, transfer line temperature 90°C.

Detector: FID 200°C.

Oven Program: 35°C (5min), 10°C/min.

Carrier Gas: Helium, 100kPa.

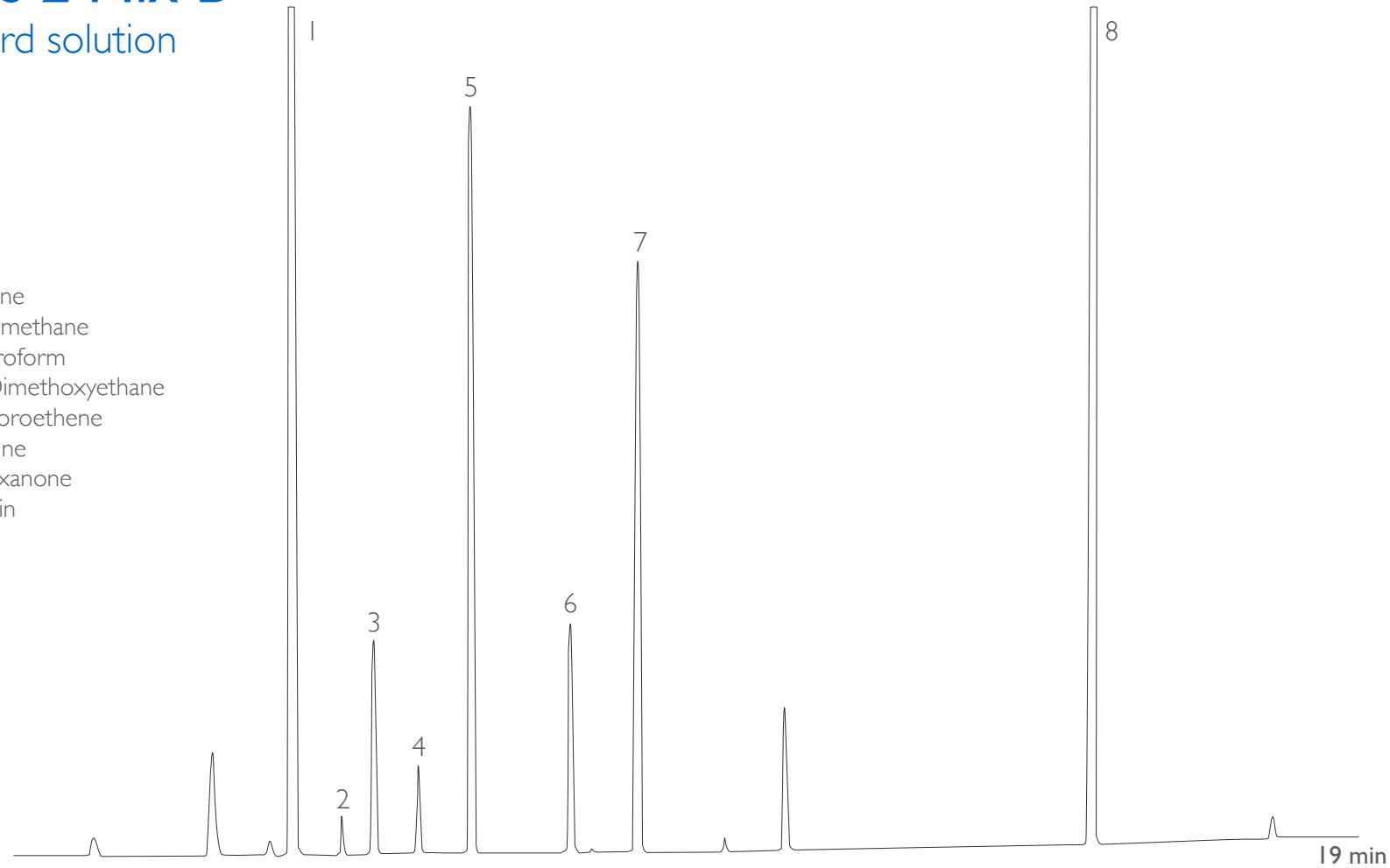
### Sample:

Residual Solvents - Class 2 Mix A, headspace sampling.



## Class 2 Mix B standard solution

1. Hexane
2. Nitromethane
3. Chloroform
4. 1,2-Dimethoxyethane
5. Trichloroethene
6. Pyridine
7. 2-Hexanone
8. Tetralin



Analysis carried out with DANI Master-SHS and Master-GC system.

Column: **MEGA-624 - 0.18mm, 1.00 $\mu$ m, 20m**  
Catalog Code: C-624-018-100-20

(USP G43 stationary phase)

### Conditions:

Injection: 1 mL injection volume, headspace equilibration temperature 80°C, equilibration time 40min, transfer line temperature 90°C.

Detector: FID 200°C.

Oven Program: 35°C (5min), 10°C/min.

Carrier Gas: Helium, 100kPa.

### Sample:

Residual Solvents - Class 2 Mix B, headspace sampling.



since  
1980



contact us: [info@mega.mi.it](mailto:info@mega.mi.it)

 follow us [@MEGAColumns](https://twitter.com/MEGAColumns)

[www.mega.mi.it](http://www.mega.mi.it)