



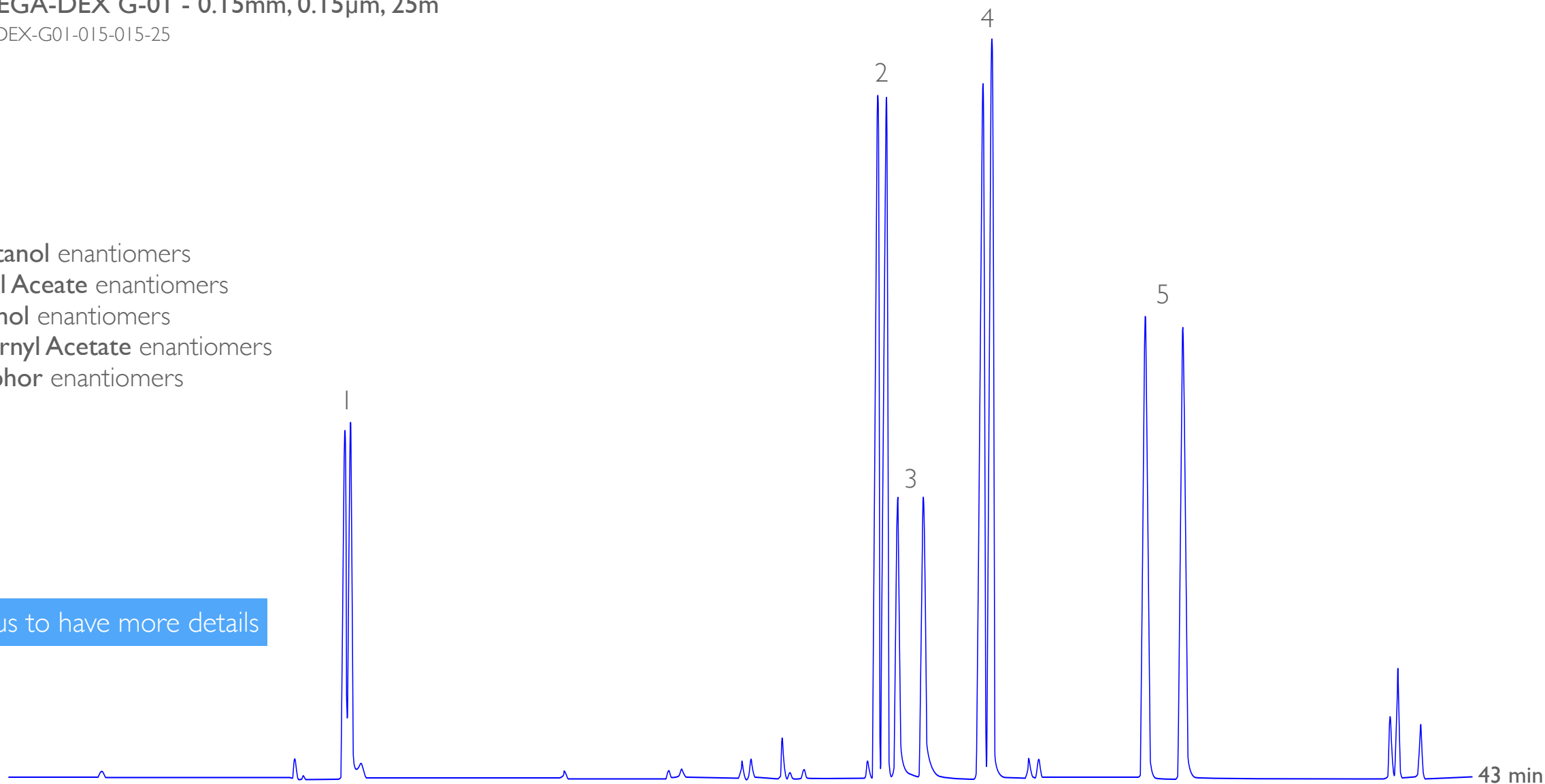
Column: MEGA-DEX G-01 - 0.15mm, 0.15 μ m, 25m

Catalog Code: DEX-G01-015-015-25

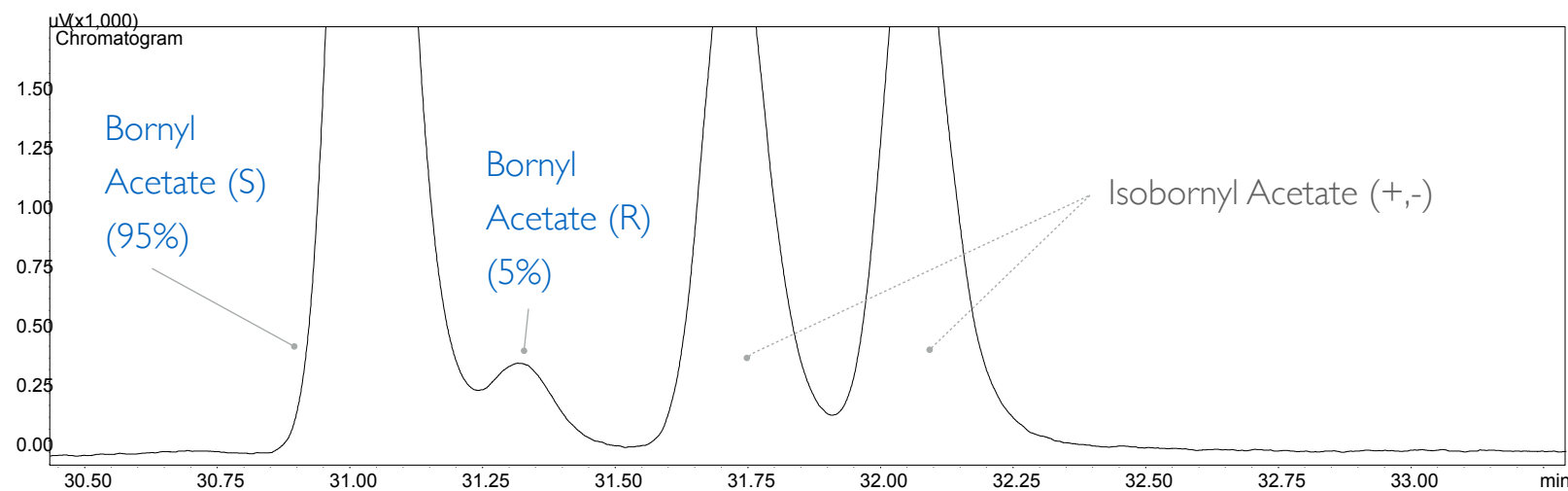
New Column

1. 2-Octanol enantiomers
2. Linalyl Aceate enantiomers
3. Menthol enantiomers
4. Isobornyl Acetate enantiomers
5. Camphor enantiomers

contact us to have more details



Acknowledgments: many thanks to Dr. Cecilia Cagliero and Prof. Carlo Bicchi, Università di Torino, Dipartimento di Scienza e Tecnologia del Farmaco, Via P. Giuria, 9, Torino, Italy.



Column: **MEGA-DEX G-01 - 0.15mm, 0.15 μm , 25m**

Catalog Code: DEX-G01-015-015-25

New Column

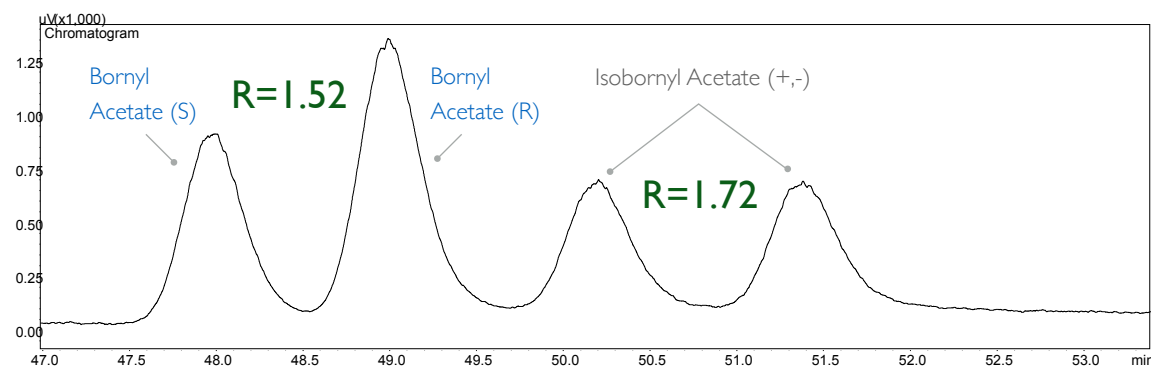
Conditions:

Injection: Split, 250°C.

Detector: FID 250°C.

Oven Program: 70°C, 1°C/min.

Carrier Gas: Hydrogen, 0.6mL/min constant flow.



Column: **MEGA-DEX G-01 - 0.20mm, 0.20 μm , 30m**

Catalog Code: DEX-G01-020-020-30

New Column

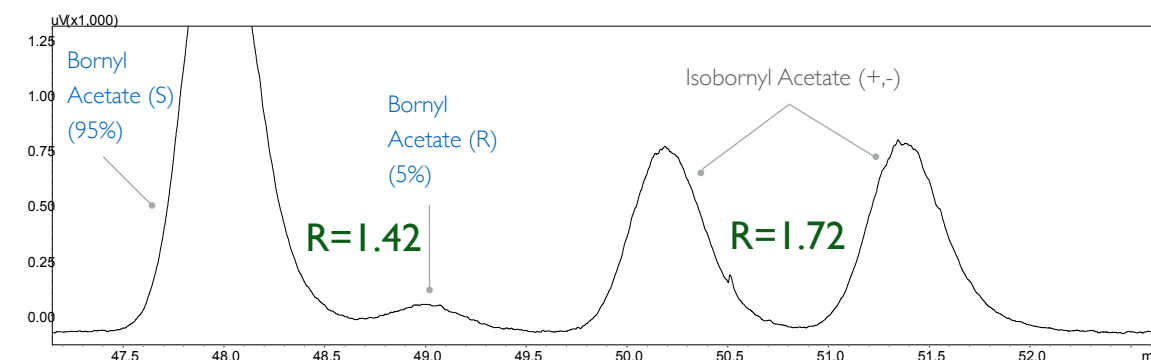
Conditions:

Injection: Split, 250°C.

Detector: FID 250°C.

Oven Program: 83°C isothermal.

Carrier Gas: Hydrogen, 0.8mL/min constant flow.



[contact us to have more details](#)

Acknowledgments: many thanks to **Dr. Cecilia Cagliero** and **Prof. Carlo Bicchi**, Università di Torino, Dipartimento di Scienza e Tecnologia del Farmaco, Via P. Giuria, 9, Torino, Italy.



since
1980



contact us: info@mega.mi.it

 follow us [@MEGAColumns](https://twitter.com/MEGAColumns)

www.mega.mi.it